

RIC
power corp.

RELIABILITY
INTEGRITY
CUSTOMER FOCUSED

Medium & Low Voltage Switchgear

Project Highlights



Manufacturing Custom Switchgear

About us

RIC Power Corp. is a medium and low voltage switchgear manufacturer in Vancouver, Canada. We provide air insulated switchgear up to 38kV.

Custom designs allow us to service a variety of industries including:

- Utility
- Oil & gas
- Shipping and transportation
- Mining
- Pulp & paper
- Marine
- Data centres
- Municipal and general industries

We're not constrained by conventional limitations. Our designs can support a variety of protection and control components which helps deliver the end user the most beneficial and cost effective solution.

Leveraging deep expertise in custom manufacturing, we effectively support consultants, contractors, and end users through every project stage. We help consultants translate complex requirements into practical solutions, provide contractors with accurately built equipment that meets demanding schedules, and ensure end users receive reliable switchgear perfectly suited to their specific application.

Contact us

We are your go-to supplier for switchgear that requires custom design and fast delivery.

Contact us today: info@ricpower.com.

Products

Metal Enclosed Switchgear
Metal Clad Switchgear
Arc Resistant Switchgear
Unit Substation

Capabilities

Outdoor (NEMA 3R)
Switchgear in E-house
Skid Mounted Substation
Marine Certification
Integrated Peripherals
(battery charger, PLC, distribution, outlets, lights, heaters etc.)

Standards

CSA 22. No 31
ANSI/IEEE C37.20.2
ANSI/IEEE C37.20.7
IEC 62271-200 upon request





Contents

Section 1.
Product Matrix & Testimonials

Section 2.
Project Highlights



Container Terminal

Arc resistant, stainless steel,
NEMA 3R switchgear with
integrated low voltage in
half cell.



Product Matrix

Voltage Class/ Product Category	480/600V	2.4kV	5kV	15kV	25kV
Metal Enclosed Switchgear	✓	✓	✓	✓	✓
Metal Clad Switchgear	✓	✓	✓	✓	✓
Arc Resistant Switchgear	n/a	✓	✓	✓	✓
Custom Switchgear	✓	✓	✓	✓	✓
Related Products	✓	-	✓	✓	-

Testimonials

“

There is great pride and workmanship in RIC's finished product, it is difficult to near impossible to find any deficiencies.”

~ Richardson Terminal

“

We went with RIC because of their ability to provide a custom design and deliver the product in a short amount of time. Overall we were very satisfied with their service.”

~ Finning Power Systems

“

RIC was exceptionally helpful. Their short approval time and product quality exceeded our expectations.”

~ Wajax Power Systems

Project Highlights



Container Terminal



Technical Specifications

Product Type: NEMA 3R, Arc Resistant, Metal Clad Switchgear

Ratings: 15kV, 600A, 25kAIC, 95kV BIL

No of Cells: 5 + 1

Cell Dimensions: 38"L x 102"D x 126"H

Switching Device(s): Eaton VCP-W Breakers

Relay/Meters: SEL-751A, SEL-735

Configuration: FDR-FDR-BKR-BKR-FDR

Distinctive Features:

- Arc resistant metal clad switchgear in a skin tight, NEMA 3R, 316 stainless steel enclosure
- 1 foot roof overhang
- 150kVA transformer with breaker in same cell
- LV distribution and battery charger integrated into cell 6

Container Terminal



Technical Specifications

Product Type:

Stainless Steel NEMA 3R, Arc Resistant 2MVA Substation, Skid Mounted

Distinctive Features:

- 15kV VCP-W breaker c/w isolation switch (ABB NAL)
- 2MVA oil filled, close-coupled transformer
- 600V, 2400A main with 2000A feeder and station service distribution
- RIC Electronics battery charger and Eaton low voltage switchgear incorporated into RIC Power NEMA 3R enclosure
- 30ft skid shipped as single piece

Mining



Technical Specifications

Product Type: Arc Resistant, Metal Clad Switchgear

Ratings: 5kV, 1200A, 29kAIC

No of Cells: 3

Cell Dimensions: BKR: 36"W x 91"D x 100"H

Switching Device(s): Tavrida Draw-out Breaker

Relay/Meters: GE 345, GE 750, GE 489

Configuration: BKR-BKR-BKR

Distinctive Features:

- Short lead time (12 weeks, PO to Ship)
- New ANSI cradle design for IEC style breaker
- Extreme cold environment arc exhaust hood



Technical Specifications

Product Type:	Skid Mounted, Metal Clad, NEMA 3R Switchgear
Ratings:	25kV, 1200A, 20kAIC
No of Cells:	8
Cell Dimensions:	BKR: 38"W x 117"D x 120"H CPT: 38"W x 117"D x 120"H LBS: 48"W x 117"D x 120"H LBS: 48"W x 117"D x 120"H
Switching Device(s):	Eaton VCP-W ABB NAL Load Break Switch
Relay/Meters:	ION7650, GE Multilin SR350 and F60
Configuration:	LBS-LBS-LBS-BKR-BKR-BKR-DWR/CPT-BKR
Distinctive Features:	<ul style="list-style-type: none">Outdoor, skid mounted with integrated 15kVA CPTs

Options

NEMA 3R "Skin Tight" Enclosure

- Used for outdoor and harsh environments
- Wrap any type of gear (ME/MC/AR)
- Can reduce footprint and cost

Breaker Lift Cart (image right)

- Compact and foldable for easy storage
- Capable of breaker removal from lower or upper compartment

External Remote Racking Device

- Protect operators from high probability arc fault situation



Hydro Dam

Technical Specifications

Product Type: Arc Resistant, Metal Clad Switchgear

Ratings: 15kV, 3000A, 41kAIC

No of Cells: 3 Lineups of 3

Cell Dimensions: BKR: 36"W x 91"D x 100"H

Switching Device(s): Eaton VCP-W

Relay/Meters: By Others

Configuration: Varies

Distinctive Features:

- Incorporation of C800 CTs
- Inclusion of surge arresters and surge capacitors
- Shared plenum
- Bus duct interconnections



Protection and
control for 150MW
for dam

Mining



Technical Specifications

Product Type:	Arc Resistant, Metal Clad Switchgear
Ratings:	5kV, 2000A, 25kAIC
No of Cells:	3
Cell Dimensions:	BKR: 36"W x 91"D x 100"H
Switching Device(s):	Eaton VCP-W
Relay/Meters:	GE B30, GE 850, GE 889, GE 845
Configuration:	BKR-BKR-BKR
Distinctive Features:	<ul style="list-style-type: none">• ABS marine certified• Extreme cold environment arc exhaust hood



Telecommunications

Technical Specifications

Product Type:	Low Voltage Metal Enclosed Switchgear
Ratings:	230/400V, 1200A, 50kA
No of Cells:	3
Cell Dimensions:	22"W (3P) / 27"W (4P) x 48"D x 95"H
Switching Device(s):	Eaton Magnum DS Breaker, Drawout
Relay/Meters:	Eaton Digitrip
Configuration:	BKR-BKR-CABLE
Distinctive Features:	<ul style="list-style-type: none">• Shortened depth• Integrated control panel



Port Terminal

Technical Specifications

Product Type:	Metal Clad Switchgear c/w Remote Control Panel
Ratings:	15kV, 1200A, 25kAIC
No of Cells:	5
Cell Dimensions:	36"W x 72"D x 95"H
Switching Device(s):	Eaton VCP-T
Relay/Meters:	SEL-751A, SEL-735
Configuration:	BKR-FDR-FDR-FDR-FDR

Distinctive Features:	<ul style="list-style-type: none">• Severe space restrictions• Remote HMI panel w/ breaker motor rack controls• (2) High feeder design
------------------------------	--



Oil and Gas

Technical Specifications

Product Type:	Metal Clad Switchgear
Ratings:	5kV, 2000A, 41kAIC
No of Cells:	9
Cell Dimensions:	BKR: 36"W x 91"D x 95"H
Switching Device(s):	Eaton VCP-W
Relay/Meters:	SEL-751A SEL-735 SEL-700G
Configuration:	BKR-BKR-BKR-BKR-TIEBKR-FDR-FDR-FDR

Distinctive Features:	<ul style="list-style-type: none">• Short Delivery (8 Weeks from PO to Delivery)
------------------------------	--



Offshore Platform - Oil and Gas



Technical Specifications

Product Type:	Metal Enclosed Switchgear c/w Remote HMI Panel and ABS Certified E-House
Ratings:	25kV, 600A, 16kAIC
No of Cells:	11
Cell Dimensions:	BKRM: 48"W x 68"D x 92"H TRAN: 21"W x 68"D x 92"H
Switching Device(s):	Tavrida LD, ABB NAL Switch
Relay/Meters:	SEL-751A, SEL-787, SEL- 3530
Configuration:	BKR-TRAN-FDR-FDR- TIEBKR-TRAN-FDR-FDR- FDR-FDR
Distinctive Features:	<ul style="list-style-type: none">• GL certification of 25kV switchgear• Tilt table testing of switchgear



GL Certified
Switchgear in E-House

Recycling



Technical Specifications

Product Type:	Metal Clad Switchgear
Ratings:	25kV, 600A, 25kAIC
No of Cells:	5
Cell	BKR: 36"W x 91"D x 95"H
Dimensions:	LBS/MET: 48"W x 91"D x 95"H
Switching	ABB NAL Loadbreak Switch
Device(s):	Eaton VCP-W
Relay/Meters:	SEL-751

Configuration: LBS-BKR-MET-FDR-FDR

Distinctive Features:

- Short Delivery (12 Weeks from PO to Delivery)
- (2) High Feeder Design

Mining

Technical Specifications

Product Type:	Metal Enclosed,NEMA 3R Switchgear
Ratings:	5kV, 1200A, 31.5kAIC
No of Cells:	3
Cell	CABLE: 12"W x 60"D x 68"H
Dimensions:	BKR/LBS: 42"W x 60"Dx 68"H
Switching	ABB NAL Loadbreak Switch
Device(s):	Tavrida LD Series Breaker
Relay/Meters:	Eaton EDR-5000 Eaton PMX-2260
Configuration:	CBL-BKR-LBS

Distinctive Features:

- Short height designed to fit on 737 freighter
- Enclosure suitable for installation in -40°C climate



Oil and Gas



Technical Specifications

Product Type:	Skid Mounted Metal Clad NEMA 3R Switchgear
Ratings:	25kV, 600A, 20kAIC
No of Cells:	4
Cell Dimensions:	BRKM: 36"W x 117"D x 120"H CPT: 36"W x 117"D x 120"H LBS: 48"W x 117"D x 120"H LBS: 48"W x 117"D x 120"H
Switching Device(s):	Eaton VCP-W ABB NAL Load Break Switch
Relay/Meters:	ION7650 GE Multilin SR350
Configuration:	BRK-LBS-LBS
Distinctive Features:	<ul style="list-style-type: none">Outdoor skid mounted



Utility

Technical Specifications

Product Type: Metal Clad NEMA 3R Switchgear

Ratings: 5kV, 1200A, 40kAIC

No of Cells: 2

Cell Dimensions: BRK:
36"W x 106"D x 118"H
Control:
36" W x 106"D x 118"H

Switching Device(s): Eaton, VCP-W

Relay/Meters: SEL787, SEL735, SEL2533

Configuration: BKR-CTRL

Distinctive Features:

- Short delivery



Mining



Technical Specifications

Product Type: Metal Clad Switchgear

Ratings: 5kV, 2000A, 41kAIC

No of Cells: 4

Cell Dimensions: 36"W x 72"D x 95"H

Switching Device(s): Eaton VCP-W

Relay/Meters: SEL-751A
SEL-787
SE-330

Configuration: BKR-FDR-FDR-TIE

Distinctive Features:

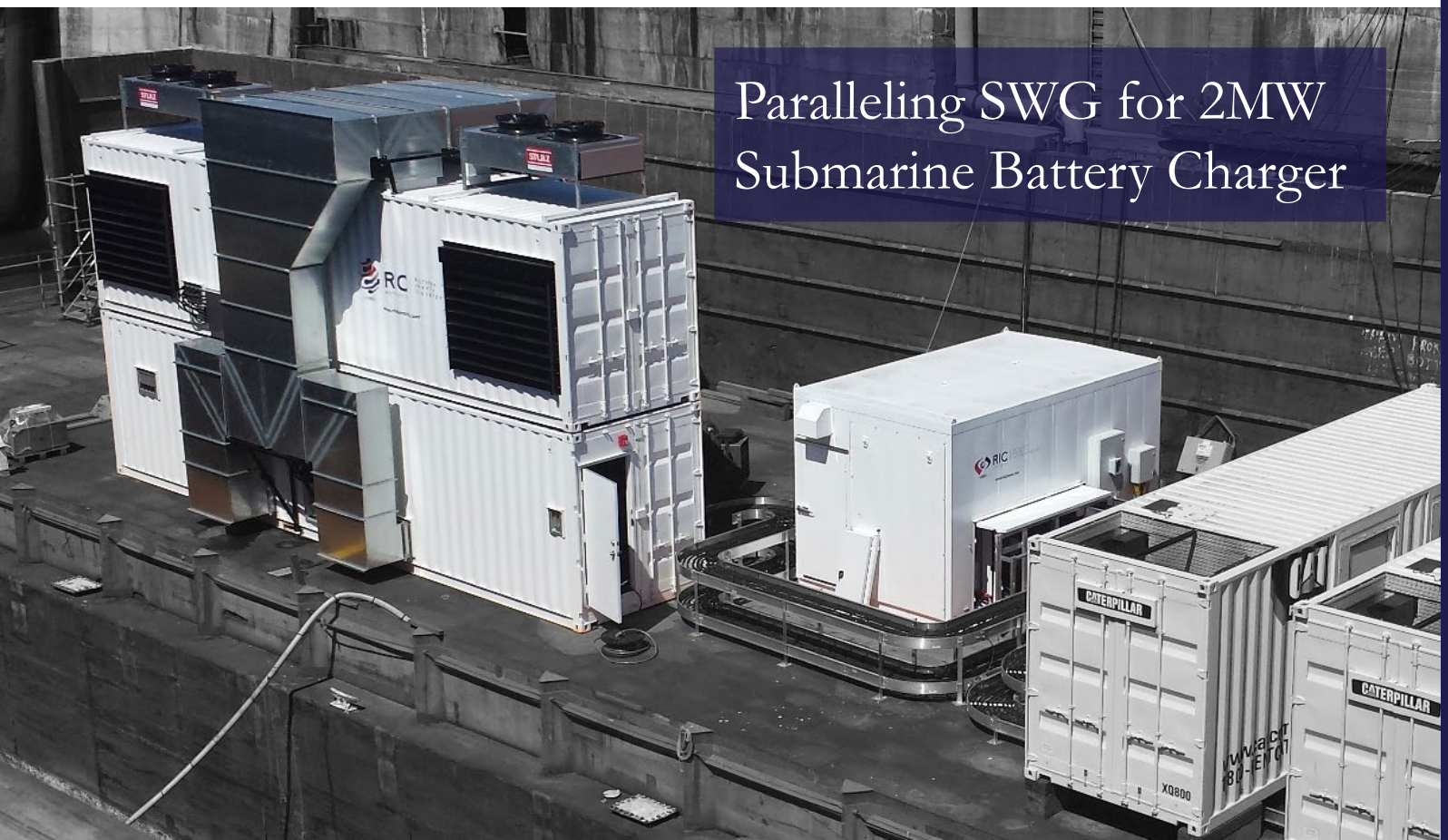
- Custom connection to existing switchgear
- Space restrictions

Technical Specifications

Product Type:	Metal Clad Switchgear
	c/w E-House and Generator Rental
Ratings:	480V, 3000A, 65kAIC
No of Cells:	4
Cell Dimensions:	24"W x 56"D x 95"H
Switching Device(s):	Eaton Magnum
Relay/Meters:	ION 7350
Configuration:	BKR-BKR-FDR-FDR
Distinctive Features:	<ul style="list-style-type: none">• Marine rated E-house• Rear accessible camlocks for switchgear connections



Paralleling SWG for 2MW Submarine Battery Charger



Mining

Technical Specifications

Product Type: Arc Resistant, Metal Clad Switchgear

Ratings: 5kV, 2000A, 25kAIC

No of Cells: 3

Cell BRK:

Dimensions: 36"W x 91"D x 100"H

Switching Device(s): Eaton, VCP-W

Relay/Meters: GE B30

GE 850

GE 889

GE 845

Configuration: BKR-BKR-BKR

Distinctive Features:

- ABS marine certified
- Extreme cold environment arc exhaust hood



Recycling



Technical Specifications

Product Type: Metal Enclosed Switchgear

Ratings: 5kV, 2000A, 25kAIC

No of Cells: 4

Cell BKRM: 30"W x 61.5"D x 92.5"H

Dimensions: BKRF: 26"W x 61.5"D x 92.5"H

CBL: 19"W x 61.5"D x 92.5"H

Switching Device(s): Eaton, VCP-W

Relay/Meters: By Others

Configuration: BKR-FDR-CBL-FDR

Distinctive Features:

- Short delivery (12 weeks from PO to delivery)
- Compact design

Mobile Utility



Technical Specifications

Product Type:	Custom Switchgear c/w Protection and Control Cabinet
Ratings:	2.4kV, 1200A, 29kAIC
No of Cells:	2
Cell Dimensions:	36"W x 54"D x 80"H
Switching Device(s):	ABB NAL Loadbreak Switch Eaton VCP-W
Relay/Meters:	By Others
Configuration:	Custom
Distinctive Features:	<ul style="list-style-type: none">Space restricted within E-house



Mining

Technical Specifications

Product Type: Metal Clad Switchgear

Ratings: 5kV, 3000A, 40kA

No of Cells: 8

Cell Dimensions: 36"W x 95"H x 91"D

Switching Eaton VCP-W

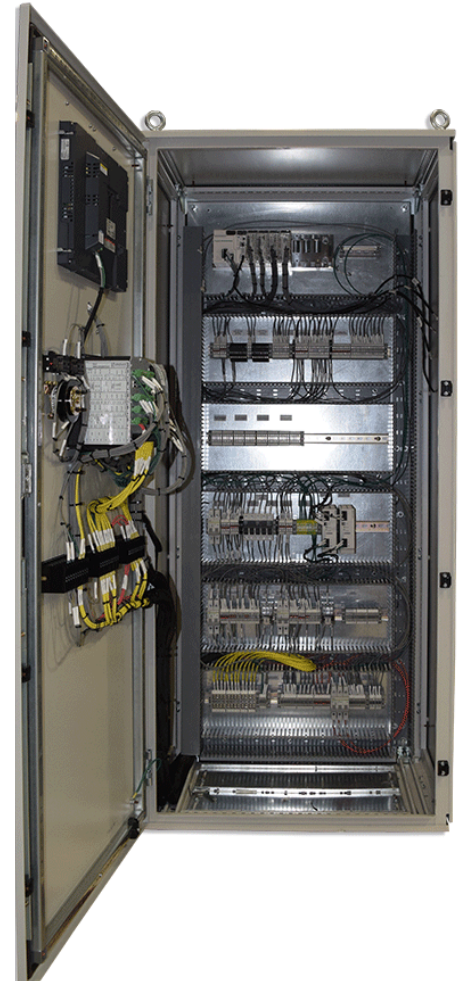
Device(s): ABB NAL Load Break Switch

Relay/Meters: SEL-700G
SEL-751

Configuration: TX-FDR-BRK-BRK-BRK-BRK-BRK-FDR

Distinctive Features:

- Paralleling/Synchronizing five Gensets c/w PLC programming.





Technical Specifications

Product Type:	Metal Clad Switchgear
Ratings:	15kV, 1200A, 25kA
No of Cells:	13
Cell Dimensions:	33" W x 100 15/16"H x 94"D
Switching Device(s):	ABB Load Break Switch Schneider VR Breaker
Relay/Meters:	GE Multilin F60 & F35 Itron Utility Meter
Configuration:	METER-BRK-TRAN-LBS-LBS-LBS-LBS-LBS-LBS-TRAN-BRK-CPT-CP
Distinctive Features:	<ul style="list-style-type: none"> NEMA 3R Skin tight





RIC
power corp.

RELIABILITY
INTEGRITY
CUSTOMER FOCUSED

RIC POWER CORP.

8325 Riverbend Court
Burnaby BC, V3N 5E7
(604) 549-8282
ricpower.com

